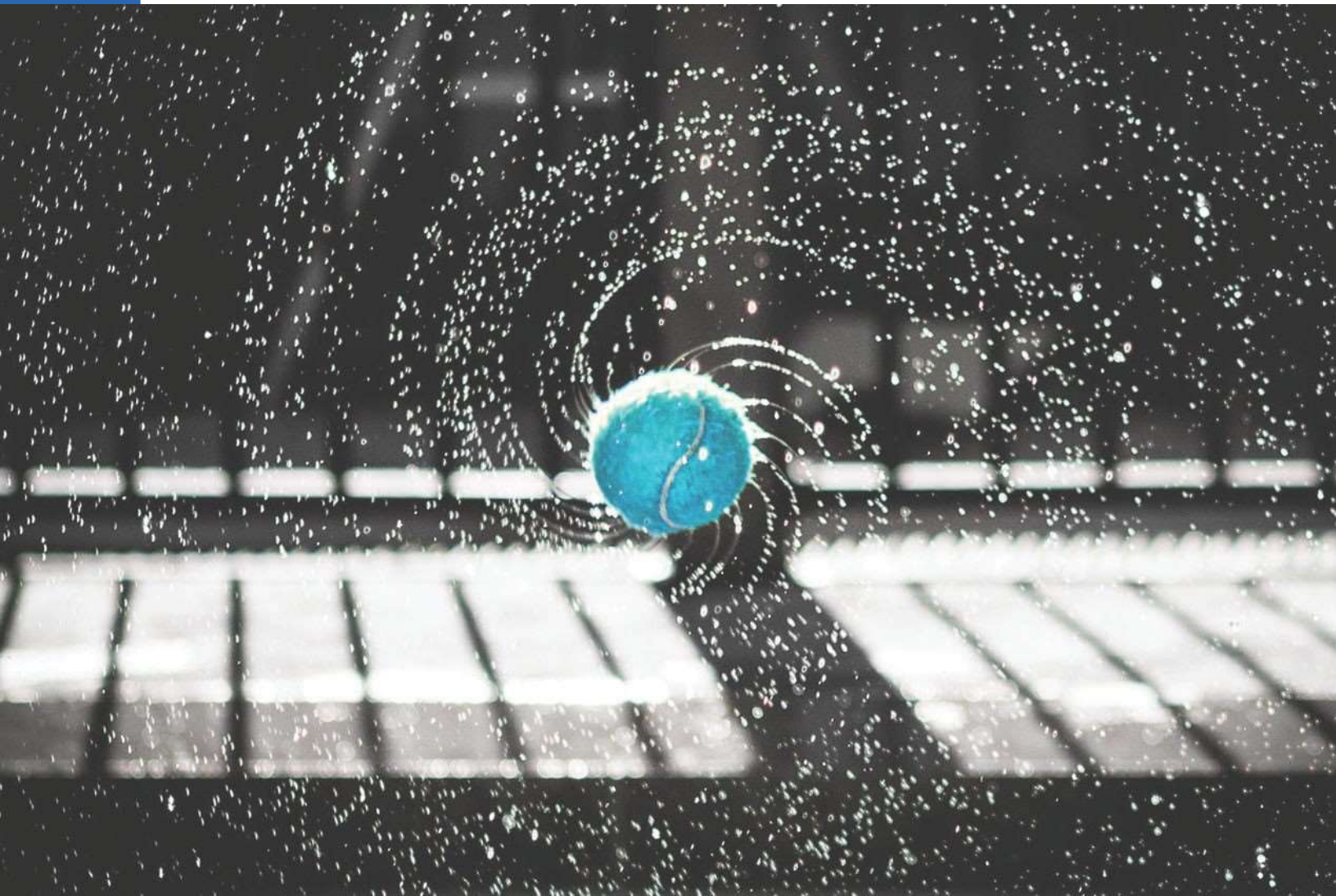




INTEGRATED OSS PLATFORM WITH PREDICTIVE ANALYTICS AND VISUALIZATION: GAIN THE OPPORTUNITY TO TRANSFORM TO ADVANTAGE



CONSOLIDATED COVERAGE LAYERS | LIVE DRIVE CAPABILITY | ARTIFICIAL INTELLIGENCE | MACHINE LEARNING | DEEP LEARNING

Foresight is the evolution to a next-generation OSS platform. It is a network intelligence platform with predictive analytics and visualization that provides users a single point of access to coverage and capacity related information, which helps to develop deep understanding of network, gain operational insights and enhance performance. Thus, the platform ensures an efficient, reliable, and profitable network for an overall greater customer experience.

# WHY CHOOSE US?

## ANALYTICS CAPABILITIES

Foresight provides analytics capabilities to the organization for helping in driving decision-making. The analytics are compiled according to the business needs to offer great user experience, which includes Customer experience analytics, Competitive Analytics, Social Network Analytics, Traffic Analytics, and Advanced Analytics in real-time to transform the data into real-world intelligence.

## CONSOLIDATED INTELLIGENCE PLATFORM

Foresight is a comprehensive and rich analytics platform which leverages data from multiple sources to create valuable insights to different user groups based on real-time and predictive analytics. It provides distributed processing, meaning that it can be spread across processing units for scalability and performance.

## END-TO-END PROVISIONING, MONITORING & CONTROL

Being integrated with each network element (from Users, RAN, Transport to Core network and) exact path of packet or data flow can be traced, monitored and optimized. Foresight allows seamless integration of the historical data and existing and emerging systems into modern technologies encompassing real-time administration, provisioning, maintenance, and monitoring delivering tremendous operational and financial benefits.



## SELF-CONFIGURATION, SELF-OPTIMIZATION & SELF-HEALING

Foresight provides the opportunity to automate the network asset planning, configuration, and optimization. Service providers gain substantial reduction in the cost and enhancement of network efficiency. Continuous network monitoring with fault management identifies and troubleshoots sleeping cells or non performing cells as part of Self-healing concept.

## EFFICIENT, RELIABLE & PROFITABLE NETWORK

Foresight platform is constructed to provide carrier grade availability features ensuring that there are no software single point of failures. It accommodates most intense networking data useful for the service providers to build network architecture. It supports low-latency, automation, configuration, and management to increase scalability, availability, and cost optimization.

## CLOSED LOOP AUTOMATION

Foresight facilitates maximizing network efficiency and minimizing unexpected costs by integrating Closed Loop Automation process. Foresight platform not only highlights the concerns but also recommend and implement optimization algorithms with Work orders. By using this process, network operators can gain closed-loop control over their network and consider appropriate action at first.

## PLATFORM MODULES

- **Dashboard Framework** - Customizable enterprise dashboards with role-based views and drill-down capabilities
- **Reporting & Analytics** - Record, measure and analyze key metrics to aid in making business-centric decisions
- **Work Order Management** - Enable users to view assigned work orders, track statuses, and download automated reports
- **NetVelocity Integration** - It has been leveraged to perform drive testing, in-building surveys, passive data capture, crowd-sourced data etc.
- **Fault Management** - Real-time network visibility and continuous monitoring to identify faults or outage
- **Configuration Management** - Manage even the smallest network entity and configure day-wise work order settings
- **Performance Management** - Consolidated monitoring, analysis and reporting of KPIs in order to determine resilience dimensions
- **Capacity Management** - Plan and manage capacity using intelligent metrics that detect peak hours, highly utilized and critically congested cells
- **Boundaries and Morphology Management** - Visualization of the boundaries for geographies Zones, Circles, State, Cities, Towns, Clusters, Buildings & Points of interest
- **Customer Network based Analytics** - Captures the customer data for different KPIs like RSRP, Drop, etc. And data for any particular IMSI can be tracked through the IMSI Analytics layer
- **Data Integrity, Operations and Monitoring Framework** - It is based on Audit, Balance & Control (ABC) paradigm giving assurances of overall analysis while pin-pointing data issues
- **Algorithm Builder** - Numerical optimization, advanced mathematics and simulations for managing complex networks and sporadic traffic
- **Site Visualization** - GIS, tabular and graphical analysis of Site classification and statistics and associated trends in roll-outs
- **Customer Care** - Rectification of end user's coverage related problems by capturing customer unique identifier number (IMSI) and network coverage data
- **Consolidated Coverage Layer** - GIS map visualization of predicted and measured data for planned and on-air sites including best server plots
- **Muting Analysis** - Comprehensive solution for distributed identification of SLA violations, outages, faults and topology information
- **FTTX** - Easily manage the transmission of reliable and accurate data through fiber optic cables over long distances at high speed
- **Coverage Issues Identification & Remediation** - Automated identification of coverage gaps based on Consolidated Network Coverage to optimize and improve site alignment
- **Trial Management** - Workorder based philosophy to perform trials in selected areas of network under observation and then roll-out to broader network
- **File Management** - Store and manage files, folders, documents and multimedia for massive data volumes in a systematic format
- **Big Data Cycle Management** - Collects data from different sources and converts large amounts of raw, unstructured data, retrieved from different sources, there are two sub-modules spark flow and data flow manager
- **BPM & Workflow Management** - Enables users to plan, execute, optimize and monitor the workflow of business operations, also provides process orchestration and rule/script based decisions
- **Over Shooter & Interference Management** - Identification and visualization of overshooting cells on the basis of different geographic levels like PAN level, cluster level and polygon level
- **Network Topology** - It provides end-to-end visualization of network elements from backbone to microwave (RAN, Access, Backbone and Microwave), which covers the entire IP network to be monitored





## BUSINESS BENEFITS

Foresight supports multi-vendor, multi-technology and is closely integrated with each network element (User Equipment's, RAN, Transport Network, Core Network, Network Probes, and EMS etc.), therefore enabling end-to-end network visualization, configuration management, performance management, and optimization. It comprises a single screen with a single login platform for managing all network entities instead of multiple logins for each vendor/node/technology. The solution leverages evolving technologies including Artificial Intelligence and Machine Learning to automate business processes and enhance customer experience.

- Scalable solution with consistently high performance
- Hold onto your most valuable asset—big data
- Advanced & high-quality data visualization output
- Drive better, faster decision making with real-time business intelligence
- Data correlation enabling discovery of new insights
- Increase competitiveness by decreasing time to market
- Automated diagnosis, remediation, and proactive supportability
- Boost productivity and lower operational costs



### Address

Foresight  
138000 Coppermine Road  
Herndon, VA 20171  
United States

### Contact

Phone +1 571-441-2529

### Online

Email [info@infoforesight.com](mailto:info@infoforesight.com)

Website [www.infoforesight.com](http://www.infoforesight.com)

